



# **2022 Fact Book**

## **FTES, Fill Rates, and Efficiencies**

Note that FTES includes only primary terms.

Prepared by the SBCCD Office of Research,  
Planning and Institutional Effectiveness

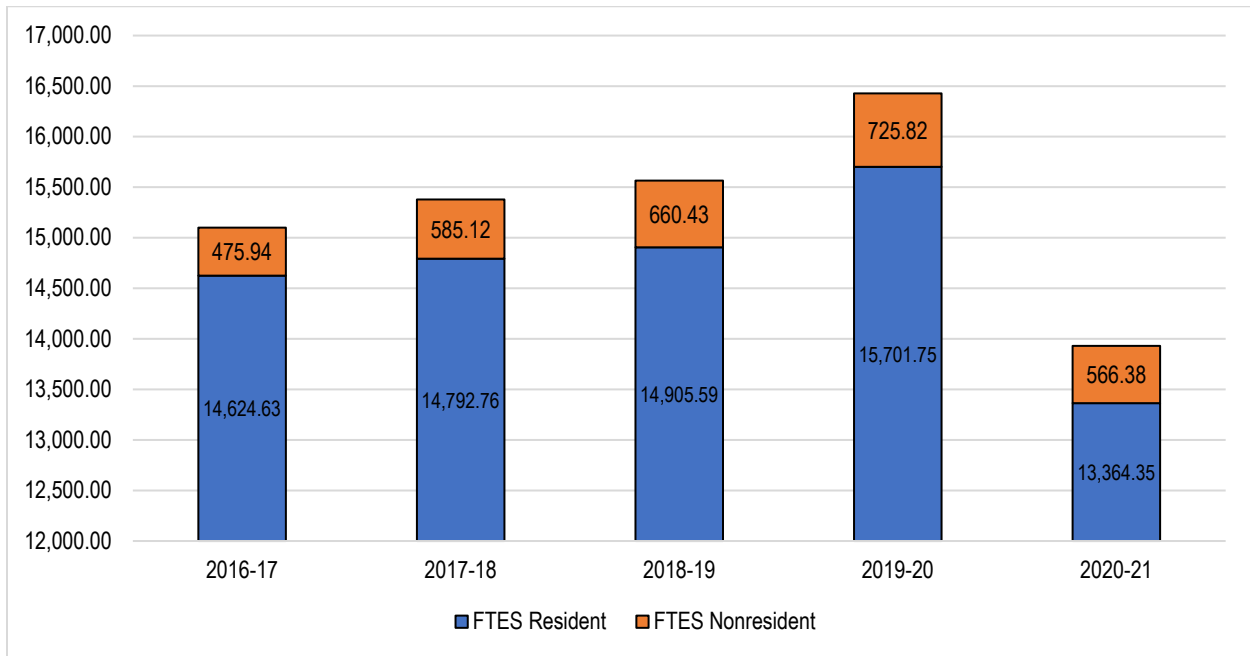


## Table of Contents

Annual FTES: 2016-17 Through 2020-21 .....	2
Annual Resident FTES By College: 2016-17 Through 2020-21.....	3
Annual Nonresident FTES By College: 2016-17 Through 2020-21 .....	4
Fill Rates: 2016-17 Through 2020-21 .....	5
Fill Rates By Terms: 2016-17 Through 2020-21 .....	6
Efficiency: Weekly Student Contact Hours (WSCH) and Full-Time Equivalent Faculty (FTEF) .....	7
Efficiency: Full-Time Equivalent Students (FTES) and Full-Time Equivalent Faculty (FTEF) .....	8
Efficiency By Terms: FTES, FTEF, FTES/FTEF Ratio.....	9



**Annual FTES: 2016-17 Through 2020-21**



Academic Year*	2016-17	2017-18	2018-19	2019-20	2020-21	5 Year Change	5 Year Average
Resident FTES	14,624.63	14,792.76	14,905.59	15,701.75	13,364.35	-8.6%	14,677.82
Nonresident FTES	475.94	585.12	660.43	725.82	566.38	+19.0%	602.74
<b>FTES Total</b>	<b>15,100.58</b>	<b>15,377.88</b>	<b>15,566.02</b>	<b>16,427.58</b>	<b>13,930.73</b>	<b>-7.7%</b>	<b>15,280.56</b>

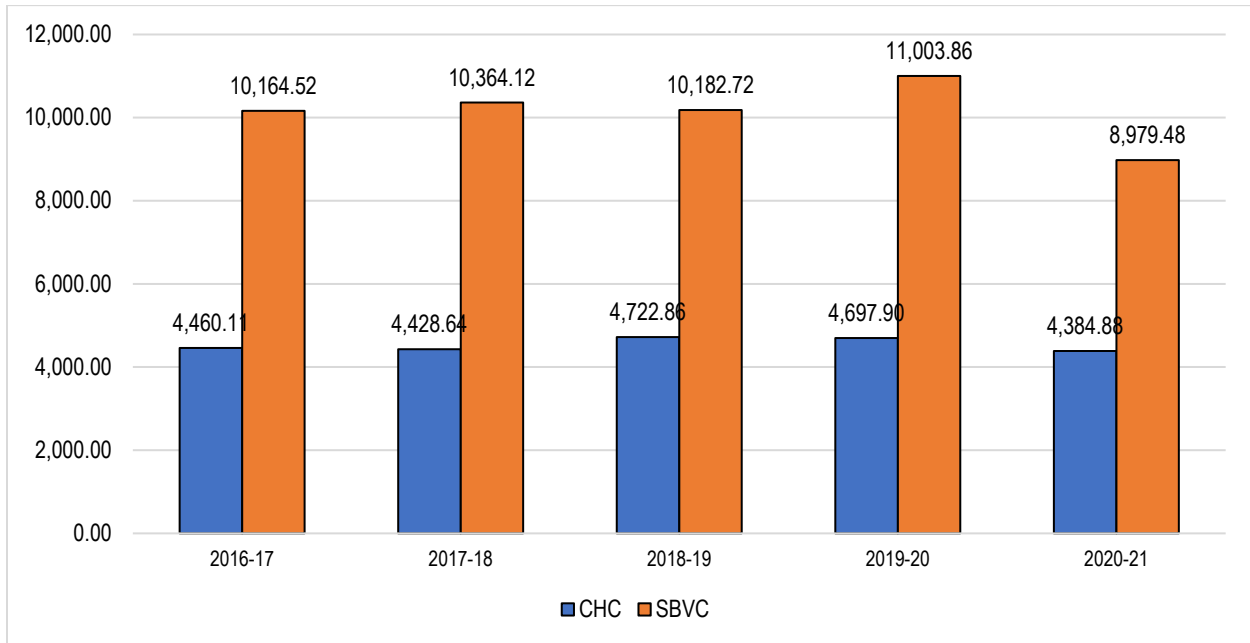
Source: Internal Executive Information System (EIS)

Note: \* based on section's start date not reporting year

Between 2016-17 and 2020-21, the District FTES declined by 7.7%, from 15,100.58 in 2016-17 to 13,930.73 in 2020-21. The resident FTES declined by 8.6%, from 14,624.63 in 2016-17 to 13,364.35 in 2020-21, and the nonresident FTES increased by 19.0%, from 475.94 in 2016-17 to 566.38 in 2020-21.



**Annual Resident FTES By College: 2016-17 Through 2020-21**



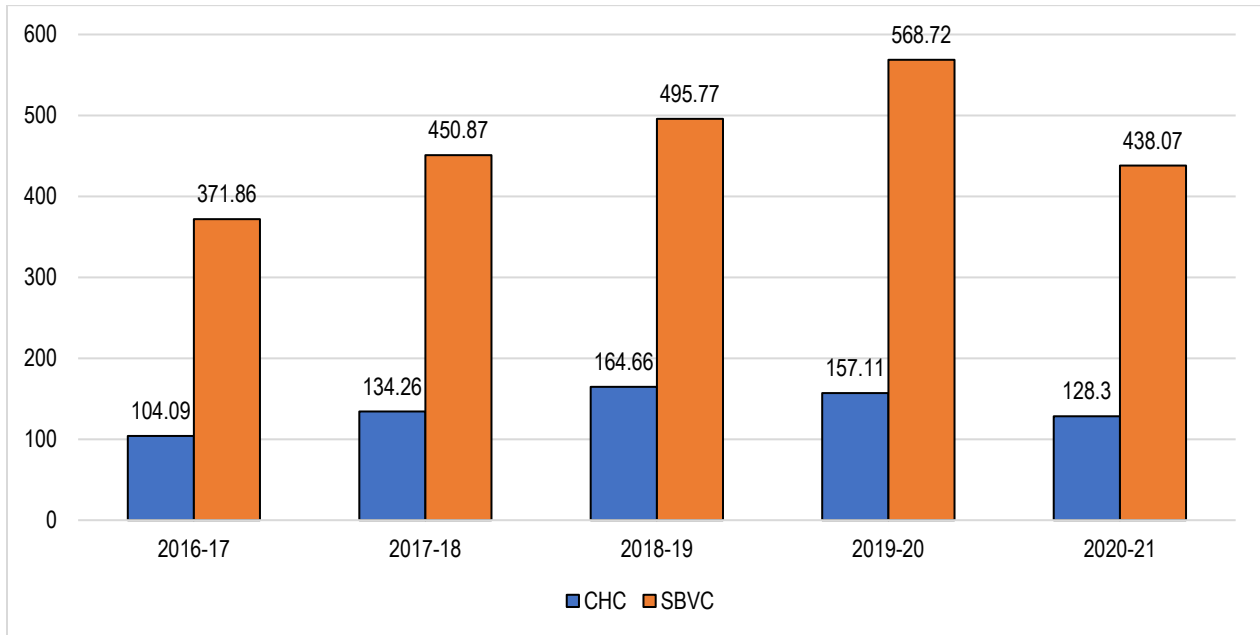
	Resident FTES 2016-17	Resident FTES 2017-18	Resident FTES 2018-19	Resident FTES 2019-20	Resident FTES 2020-21	5 Year Change	5 Year Average
CHC	4,460.11	4,428.64	4,722.86	4,697.90	4,384.88	-1.7%	4,538.88
SBVC	10,164.52	10,364.12	10,182.72	11,003.86	8,979.48	-11.7%	10,138.94
SBCCD	14,624.63	14,792.76	14,905.58	15,701.76	13,364.36	-8.6%	14,677.82

Source: Internal Executive Information System (EIS)

Between 2016-17 and 2020-21, CHC’s resident FTES declined by 1.7%, from 4,460.11 in 2016-17 to 4,384.88 in 2020-21, and SBVC’s resident FTES declined by 11.7%, from 10,164.52 in 2016-17 to 8,979.48 in 2020-21.



**Annual Nonresident FTES By College: 2016-17 Through 2020-21**



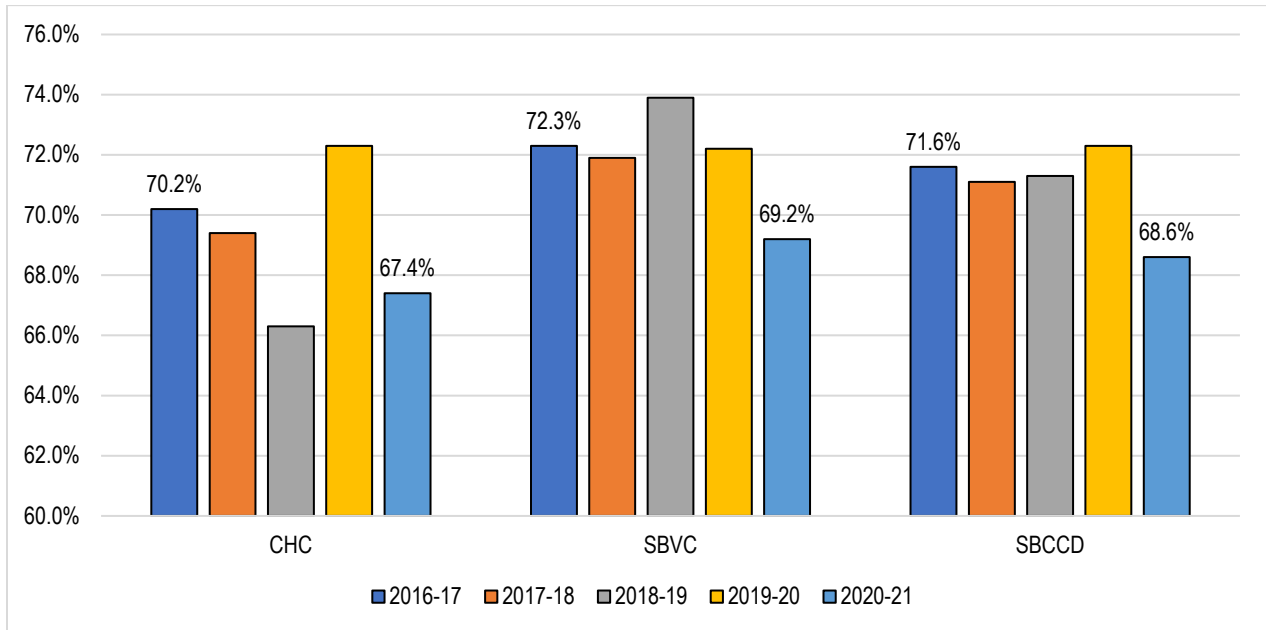
	Nonresident FTES 2016-17	Nonresident FTES 2017-18	Nonresident FTES 2018-19	Nonresident FTES 2019-20	Nonresident FTES 2020-21	5 Year Change	5 Year Average
CHC	104.09	134.26	164.66	157.11	128.30	+23.3%	137.68
SBVC	371.86	450.87	495.77	568.72	438.07	+17.8%	465.06
SBCCD	475.94	585.12	660.43	725.82	566.37	+19.0%	602.73

Source: Internal Executive Information System (EIS)

Between 2016-17 and 2020-21, CHC’s nonresident FTES increased by 23.3%, from 104.09 in 2016-17 to 128.3 in 2020-21, and SBVC’s nonresident FTES increased by 17.8%, from 371.86 in 2016-17 to 438.07 in 2020-21.



**Fill Rates: 2016-17 Through 2020-21**



Academic Year*	Crafton Hills College			San Bernardino Valley College			SBCCD		
	Capacity	Enrollments	Fill Rate	Capacity	Enrollments	Fill Rate	Capacity	Enrollments	Fill Rate
2016-17	52,096	36,588	70.2%	108,854	78,664	72.3%	160,950	115,252	71.6%
2017-18	54,101	37,564	69.4%	119,449	85,876	71.9%	173,550	123,440	71.1%
2018-19	62,837	41,660	66.3%	121,175	89,536	73.9%	184,012	131,196	71.3%
2019-20	57,580	41,618	72.3%	122,797	88,709	72.2%	180,377	130,327	72.3%
2020-21	53,625	36,130	67.4%	107,069	74,059	69.2%	160,694	110,189	68.6%
<b>Grand Total</b>	<b>280,239</b>	<b>193,560</b>	<b>69.1%</b>	<b>579,344</b>	<b>416,844</b>	<b>72.0%</b>	<b>859,583</b>	<b>610,404</b>	<b>71.0%</b>

Source: Internal Executive Information System (EIS) EIS

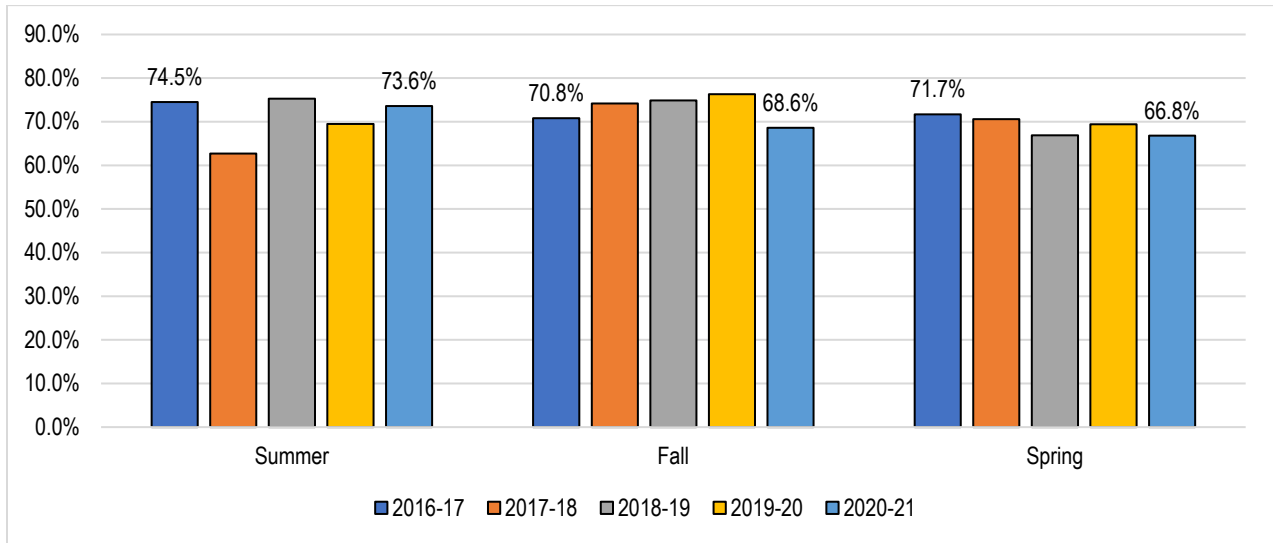
Note: \* based on section's start date not reporting year

Fill Rate is the actual enrollment divided by the potential enrollment (capacity) and refers to the percent of students enrolled at census as determined by the capacity.

On average, between 2016-17 and 2020-21, the fill rate for SBCCD declined by 3.0 percentage points, from 71.6% in 2016-17 to 68.6% in 2020-21, with a five-year average of 71.0%.



**Fill Rates By Terms: 2016-17 Through 2020-21**



	Crafton Hills College			San Bernardino Valley College			SBCCD		
	Capacity	Enrollments	Fill Rate	Capacity	Enrollments	Fill Rate	Capacity	Enrollments	Fill Rate
2016 Summer	4,634	3,460	74.7%	12,746	9,490	74.5%	17,380	12,950	74.5%
2017 Summer	7,002	3,750	53.6%	15,550	10,396	66.9%	22,552	14,146	62.7%
2018 Summer	5,395	4,120	76.4%	16,144	12,103	75.0%	21,539	16,223	75.3%
2019 Summer	6,746	4,646	68.9%	16,838	11,751	69.8%	23,584	16,397	69.5%
2020 Summer	7,072	4,713	66.6%	14,855	11,435	77.0%	21,927	16,148	73.6%
<b>Grand Total</b>	<b>30,849</b>	<b>20,689</b>	<b>67.1%</b>	<b>76,133</b>	<b>55,175</b>	<b>72.5%</b>	<b>106,982</b>	<b>75,864</b>	<b>70.9%</b>

	Crafton Hills College			San Bernardino Valley College			SBCCD		
	Capacity	Enrollments	Fill Rate	Capacity	Enrollments	Fill Rate	Capacity	Enrollments	Fill Rate
2016 Fall	23,349	16,289	69.8%	47,012	33,535	71.3%	70,361	49,824	70.8%
2017 Fall	24,383	18,025	73.9%	50,051	37,211	74.3%	74,434	55,236	74.2%
2018 Fall	26,570	19,323	72.7%	51,097	38,876	76.1%	77,667	58,199	74.9%
2019 Fall	26,598	20,370	76.6%	57,785	44,000	76.1%	84,383	64,370	76.3%
2020 Fall	24,336	16,814	69.1%	48,174	32,953	68.4%	72,510	49,767	68.6%
<b>Grand Total</b>	<b>125,236</b>	<b>90,821</b>	<b>72.5%</b>	<b>254,119</b>	<b>186,575</b>	<b>73.4%</b>	<b>379,355</b>	<b>277,396</b>	<b>73.1%</b>

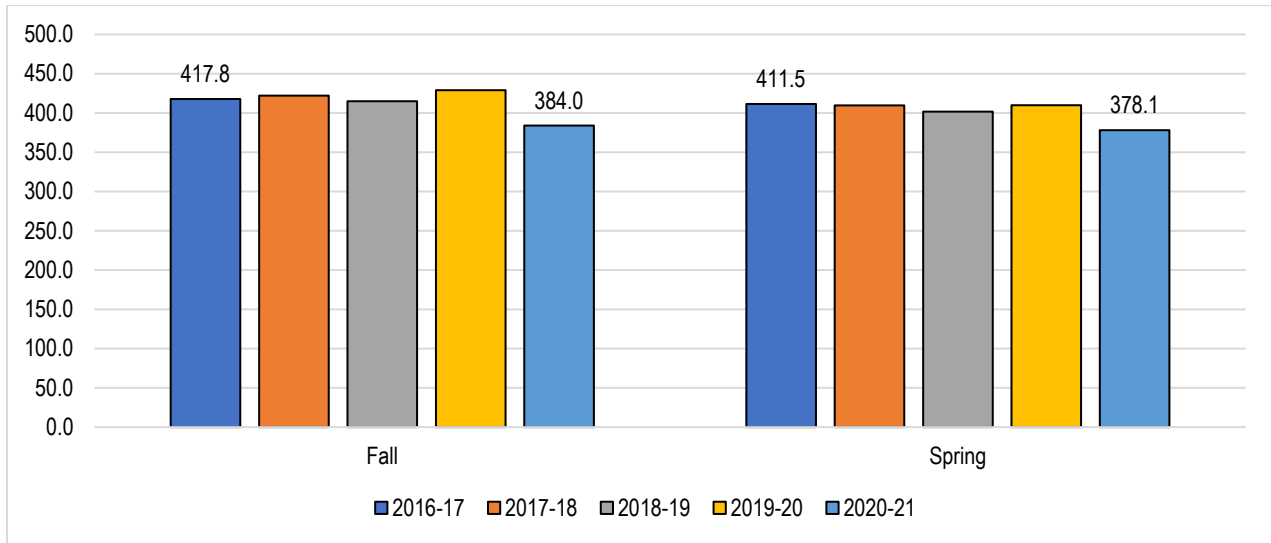
	Crafton Hills			San Bernardino Valley College			SBCCD		
	Capacity	Enrollments	Fill Rate	Capacity	Enrollments	Fill Rate	Capacity	Enrollments	Fill Rate
2017 Spring	24,113	16,839	69.8%	49,096	35,639	72.6%	73,209	52,478	71.7%
2018 Spring	22,716	15,789	69.5%	53,848	38,269	71.1%	76,564	54,058	70.6%
2019 Spring	30,872	18,217	59.0%	53,934	38,557	71.5%	84,806	56,774	66.9%
2020 Spring	24,532	17,626	71.8%	54,298	37,050	68.2%	78,830	54,676	69.4%
2021 Spring	22,217	14,603	65.7%	44,040	29,671	67.4%	66,257	44,274	66.8%
<b>Grand Total</b>	<b>130,790</b>	<b>83,665</b>	<b>64.0%</b>	<b>254,852</b>	<b>180,693</b>	<b>70.9%</b>	<b>385,642</b>	<b>264,358</b>	<b>68.6%</b>

Source: Internal Executive Information System (EIS)

Between 2016-17 and 2020-21, the overall fill rate was highest in Fall (73.1%), compared to Summer (70.9%) and Spring (68.6%). Fill rates decreased for Spring (from 71.7% in 2016-17 to 66.8% in 2020-21), decreased for Fall (from 70.8% in 2016-17 to 68.6% in 2020-21), and decreased for Summer (from 74.5% in 2016-17 to 73.6% in 2020-21).



**Efficiency: Weekly Student Contact Hours (WSCH) and Full-Time Equivalent Faculty (FTEF)**



	Crafton Hills College			San Bernardino Valley College			SBCCD		
	WSCH	FTEF	WSCH/ FTEF	WSCH	FTEF	WSCH/ FTEF	WSCH	FTEF	WSCH/ FTEF
2016 Fall	63,827	147.824	431.78	135,615	329.508	411.57	199,442	477.332	417.83
2017 Fall	64,986	149.354	435.11	144,207	346.267	416.46	209,193	495.621	422.08
2018 Fall	66,890	150.536	444.34	139,152	345.842	402.36	206,042	496.378	415.09
2019 Fall	69,485	153.529	452.59	158,569	377.977	419.52	228,054	531.506	429.07
2020 Fall	62,971	144.791	434.91	123,655	341.255	362.35	186,626	486.046	383.97
<b>Grand Total</b>	<b>328,159</b>	<b>746.034</b>	<b>439.87</b>	<b>701,198</b>	<b>1,740.849</b>	<b>402.79</b>	<b>1,029,356</b>	<b>2,486.883</b>	<b>413.91</b>

	Crafton Hills College			San Bernardino Valley College			SBCCD		
	WSCH	FTEF	WSCH/ FTEF	WSCH	FTEF	WSCH/ FTEF	WSCH	FTEF	WSCH/ FTEF
2017 Spring	61,128	145.586	419.88	141,887	347.715	408.06	203,015	493.301	411.54
2018 Spring	60,891	142.239	428.09	144,426	358.998	402.30	205,317	501.237	409.62
2019 Spring	65,280	148.760	438.82	140,136	362.500	386.58	205,416	511.260	401.78
2020 Spring	60,950	144.773	421.00	146,336	361.006	405.36	207,286	505.779	409.83
2021 Spring	55,813	132.529	421.14	116,932	324.297	360.57	172,745	456.826	378.14
<b>Grand Total</b>	<b>304,061</b>	<b>713.887</b>	<b>425.92</b>	<b>689,717</b>	<b>1,754.516</b>	<b>393.11</b>	<b>993,779</b>	<b>2,468.403</b>	<b>402.60</b>

Source: Internal Executive Information System (EIS)

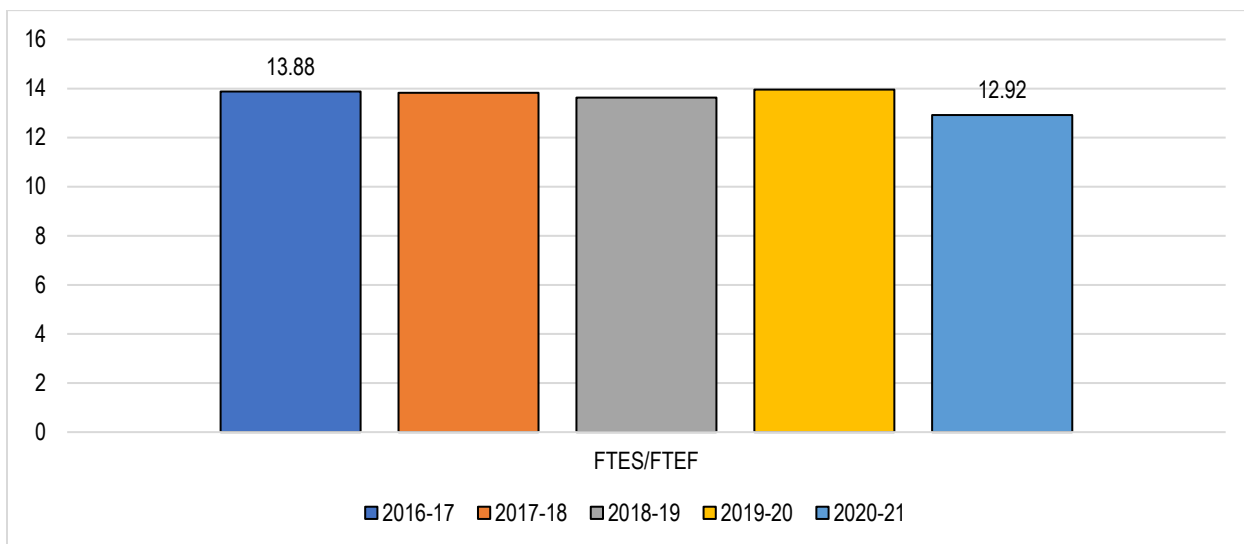
WSCH/FTEF shows the relationship between Weekly Student Contact Hours (WSCH) and Full-Time Equivalent Faculty (FTEF). This measure is used as an indicator of instructional efficiency. The ratio, WSCH per FTEF, could be interpreted in terms of cost-efficiency or instructional quality.

Between 2016-17 and 2020-21, the Fall WSCH/FTEF values for SBCCD decreased from 417.83 in Fall 2016 to 383.97 in Fall 2020, an 8.1% decrease. The Spring WSCH/FTEF values also declined from 411.54 in Spring 2016 to 378.14 in Spring 2021, an 8.1% decrease.





**Efficiency: Full-Time Equivalent Students (FTES) and Full-Time Equivalent Faculty (FTEF)**



Academic Year*	Crafton Hills College			San Bernardino Valley College			SBCCD		
	FTES	FTEF	FTES/FTEF	FTES	FTEF	FTES/FTEF	FTES	FTEF	FTES/FTEF
2016-17	4,564.20	323.85	14.09	10,536.38	763.87	13.79	15,100.58	1087.72	13.88
2017-18	4,602.77	323.72	14.22	10,984.46	803.42	13.67	15,587.23	1127.14	13.83
2018-19	4,887.52	332.87	14.68	10,678.50	809.35	13.19	15,566.02	1142.22	13.63
2019-20	4,918.22	333.64	14.74	10,817.11	823.37	13.14	16,427.58	1176.74	13.96
2020-21	4,513.18	314.07	14.37	9,417.55	763.89	12.33	13,930.73	1077.96	12.92
<b>Grand Total</b>	<b>23,485.89</b>	<b>1628.14</b>	<b>14.42</b>	<b>52,434.00</b>	<b>3963.90</b>	<b>13.23</b>	<b>76,612.14</b>	<b>5611.77</b>	<b>13.65</b>

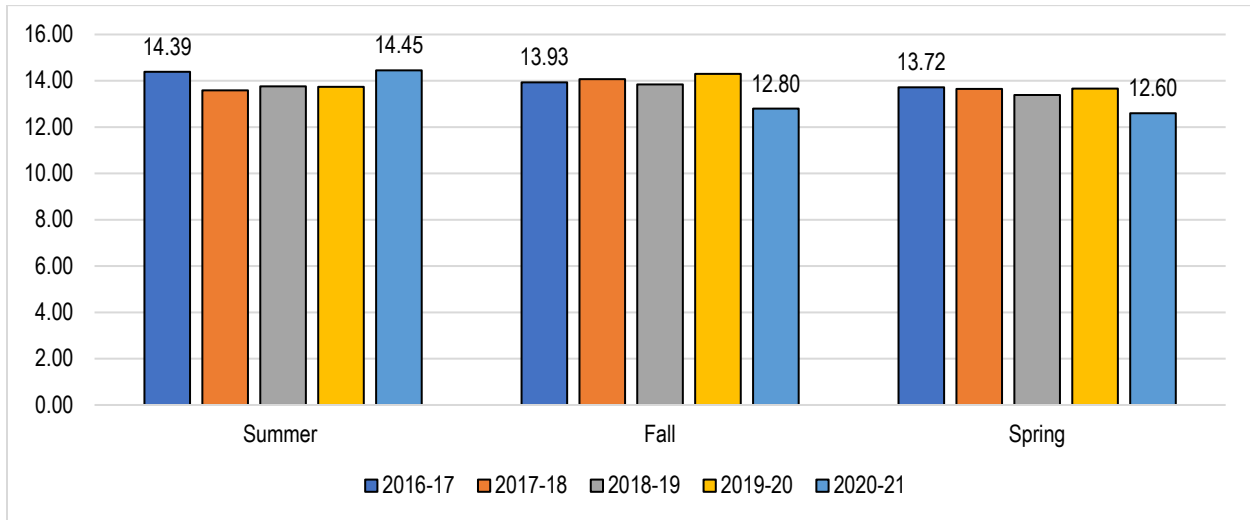
Source: Internal Executive Information System (EIS)  
 Note: \* based on section's start date not reporting year

The FTES per FTEF ratio shows the number of full-time equivalent students (FTES) served by each full-time equivalent faculty (FTEF). This measure is used as an indicator of institutional efficiency for fiscal responsibility. An FTES/FTEF Ratio of 17.5 is the equivalent of the WSCH/FTEF ratio of 525 and means that the college/district served 17.5 full-time students for every one full-time faculty.

Between 2016-17 and 2020-21, the FTES/FTEF for SBCCD declined from 13.88 in 2016-17 to 12.92 in 2020-21, a 6.9% decrease. The FTES/FTEF for CHC increased from 14.09 in 2016-17 to 14.37 in 2020-21, an 1.9% increase. The FTES/FTEF for SBVC declined from 13.88 in 2016-17 to 12.92 in 2020-21, a 10.6% decrease.



**Efficiency By Terms: FTES, FTEF, FTES/FTEF Ratio**



	Crafton Hills College			San Bernardino Valley College			SBCCD		
	FTES	FTEF	FTES/ FTEF	FTES	FTEF	FTES/ FTEF	FTES	FTEF	FTES/ FTEF
2016 Summer	399.04	30.44	13.11	1,286.31	86.65	14.84	1,685.35	117.09	14.39
2017 Summer	406.87	32.12	12.67	1,363.35	98.16	13.89	1,770.22	130.28	13.59
2018 Summer	483.26	33.57	14.39	1,368.88	101.01	13.55	1,852.15	134.58	13.76
2019 Summer	507.18	35.32	14.36	1,409.08	104.14	13.53	1,916.27	139.45	13.74
2020 Summer	553.70	36.75	15.07	1,397.99	98.34	14.22	1,951.69	135.08	14.45
<b>Grand Total</b>	<b>2,350.05</b>	<b>168.20</b>	<b>13.97</b>	<b>6,825.61</b>	<b>488.28</b>	<b>13.98</b>	<b>9,175.68</b>	<b>656.49</b>	<b>13.98</b>

Source: Internal Executive Information System (EIS)

	Crafton Hills College			San Bernardino Valley College			SBCCD		
	FTES	FTEF	FTES/ FTEF	FTES	FTEF	FTES/ FTEF	FTES	FTEF	FTES/ FTEF
2016 Fall	2,127.56	147.82	14.39	4,520.49	329.51	13.72	6,648.06	477.33	13.93
2017 Fall	2,166.20	149.35	14.50	4,806.90	346.27	13.88	6,973.10	495.62	14.07
2018 Fall	2,229.66	150.54	14.81	4,638.41	345.84	13.41	6,868.07	496.38	13.84
2019 Fall	2,316.16	153.53	15.09	5,285.62	377.98	13.98	7,601.79	531.51	14.30
2020 Fall	2,099.03	144.79	14.50	4,121.84	341.26	12.08	6,220.87	486.05	12.80
<b>Grand Total</b>	<b>10,938.61</b>	<b>746.03</b>	<b>14.66</b>	<b>23,373.26</b>	<b>1,740.85</b>	<b>13.43</b>	<b>34,311.89</b>	<b>2,486.88</b>	<b>13.80</b>

Source: Internal Executive Information System (EIS)

	Crafton Hills College			San Bernardino Valley College			SBCCD		
	FTES	FTEF	FTES/ FTEF	FTES	FTEF	FTES/ FTEF	FTES	FTEF	FTES/ FTEF
2017 Spring	2,037.60	145.59	14.00	4,729.58	347.72	13.60	6,767.17	493.30	13.72
2018 Spring	2,029.70	142.24	14.27	4,814.21	359.00	13.41	6,843.91	501.24	13.65
2019 Spring	2,174.60	148.76	14.62	4,671.20	362.50	12.89	6,845.80	511.26	13.39
2020 Spring	2,031.65	144.77	14.03	4,877.87	361.01	13.51	6,909.52	505.78	13.66
2021 Spring	1,860.44	132.53	14.04	3,897.73	324.30	12.02	5,758.17	456.83	12.60
<b>Grand Total</b>	<b>10,133.99</b>	<b>713.89</b>	<b>14.20</b>	<b>22,990.59</b>	<b>1,754.52</b>	<b>13.10</b>	<b>33,124.57</b>	<b>2,468.40</b>	<b>13.42</b>

Source: Internal Executive Information System (EIS)